

## PARK CABINS

Current as at 1<sup>st</sup> January, 2010

ALL DETAILS ARE SUBJECT TO CHANGE WITHOUT NOTICE. THIS OFFER WILL NOT BE VALID WITH ANY OTHER PROMOTION.



### One Bedroom Single Wide

Floor Plan	M <sup>2</sup>	Meters	Cost includes delivery up to 100 road kms (GST inc)
Weekender	23.1m <sup>2</sup>	7m x 3.3m	\$33,098
Cowra	24.7m <sup>2</sup>	7.5m x 3.3m	\$35,249
Nerang	33.6m <sup>2</sup>	8m x 4.2m	\$47,091

### Two & Three Bedroom Single Wide

Floor Plan	M <sup>2</sup>	Meters	Cost includes delivery up to 100 road kms (GST inc)
Crestview	27.3m <sup>2</sup>	7m x 3.9m	\$38,733
Kioloa	36m <sup>2</sup>	8m x 4.5m	\$50,406
Myola	29.9m <sup>2</sup>	8.3m x 3.6m	\$41,807
Tathra	39.1m <sup>2</sup>	8.7m x 4.5m	\$54,780
Lane Cove	40.5m <sup>2</sup>	9m x 4.5m	\$56,159
Bawley Point	42.75m <sup>2</sup>	9.5m x 4.5m	\$58,898
Sandy Hollow	43.65m <sup>2</sup>	9.7m x 4.5m	\$60,475
Meroo	50.4m <sup>2</sup>	10.5m x 4.8m	\$69,473
Tuross	50m <sup>2</sup>	10m x 5m	\$68,358
Sutton Forest	42m <sup>2</sup>	10.5m x 4m	\$58,667
Papua	49.5m	11m x 4.5m	\$68,072
Ulladulla	54m <sup>2</sup>	12m x 4.5m	\$73,231

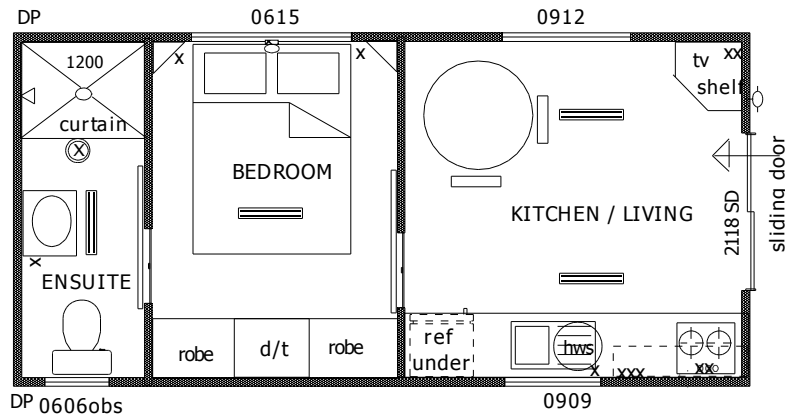
### Two Bedroom Double Wide

Floor Plan	M <sup>2</sup>	Meters	Cost includes delivery up to 100 road kms (GST inc)
Bendalong	49m <sup>2</sup>	7m x 7m	\$61,770
Albatross	53.6m <sup>2</sup>	8m x 6.7m	\$68,126
Tarawa	63m <sup>2</sup>	10.5m x 6m	\$77,930

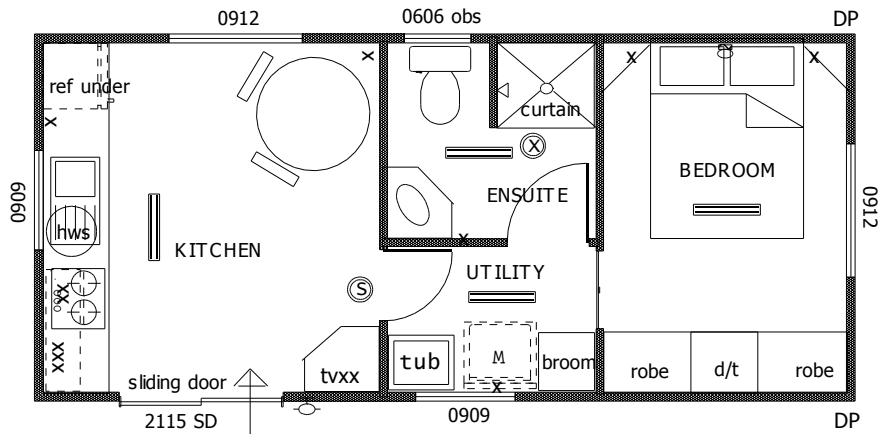
Note: All above figures are approximate.

Prices do not include meter box, verandah, baseboards, steps, freight (except that which might apply from time to time for promotional purposes), siting, site preparation or levelling, piers or tie-downs, crane hire, silt/site fencing, park fees or the connection of utilities (gas, water, electricity, storm water, sewerage and external hot water systems). When the decision is made to proceed further, you will be required to enter into the Agreement for the Preparation of Working Drawings & Specifications & Fees Prior to Construction. These cabins are built to Local Government Act 1995 (Caravans, Camping and Movable Dwellings) and are generally not suitable as permanent residences on a block of land as room sizes may be too small for permanent dwelling. Prices are subject to change without notice.

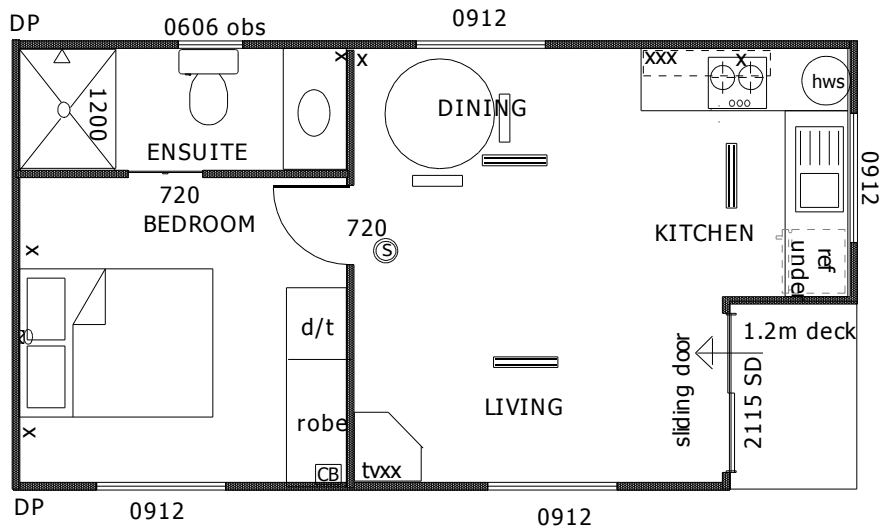
### Weekender 7m x 3.3m



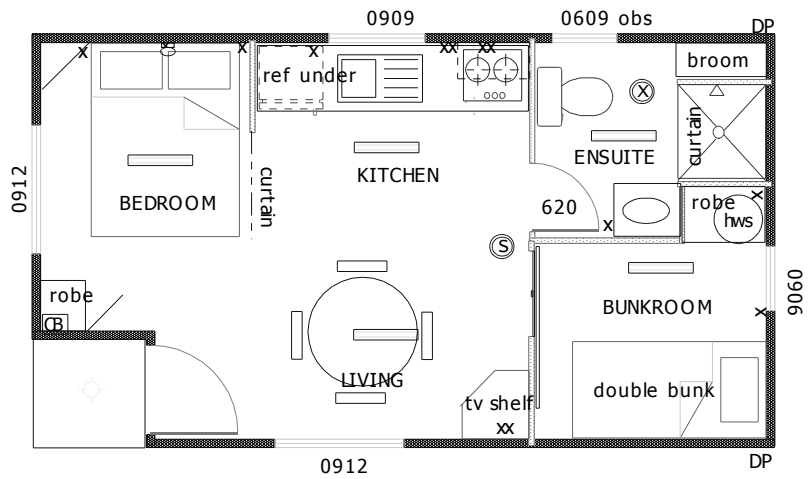
### Cowra 7.5m x 3.3m



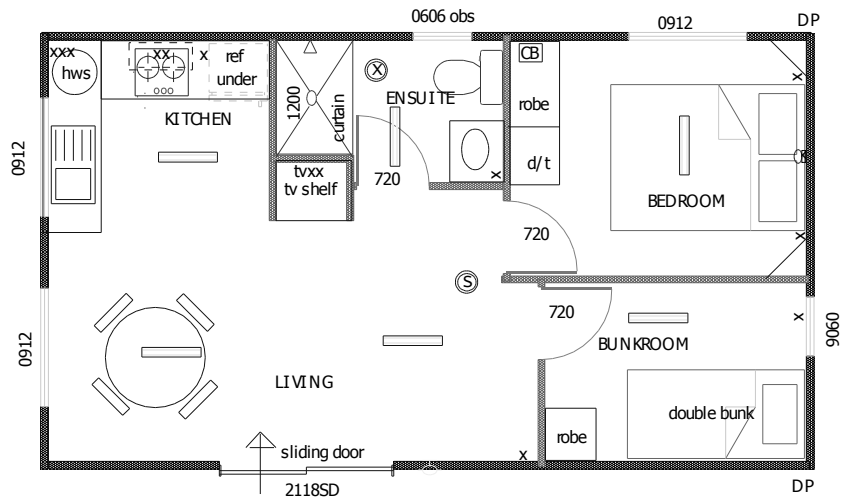
### Nerang 8m x 4.2m



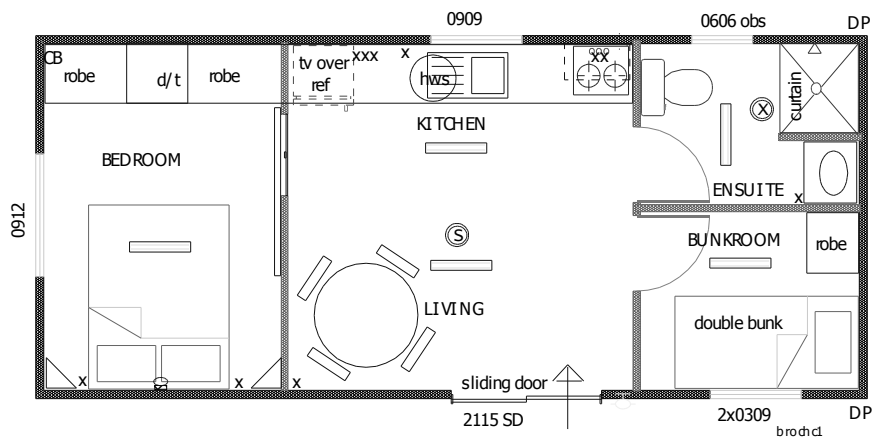
### Crestview 7m x 3.9m



### Kioloa 8m x 4.5

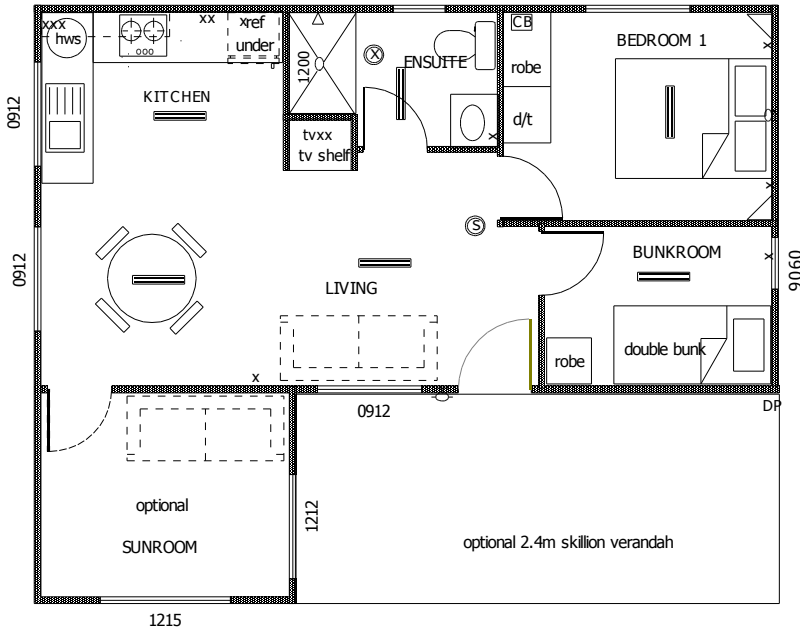


### Myola 8.3m x 3.6m



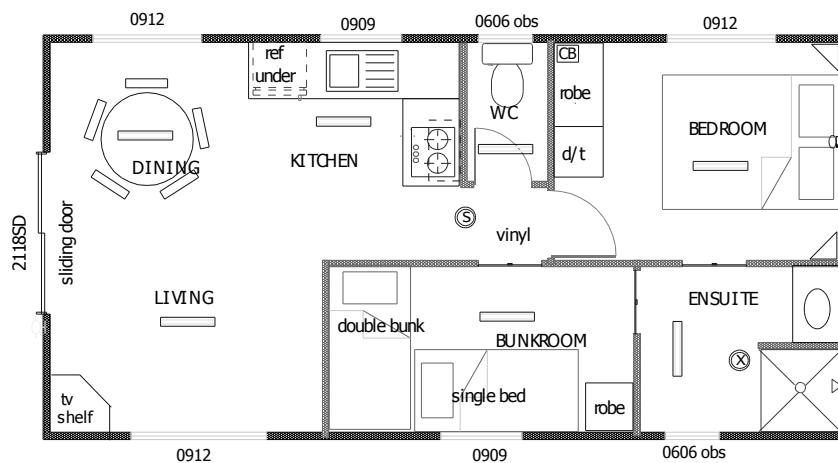
Only have a small site – try one of these for your holiday cabin!

## Tathra 8.7m x 4.5m

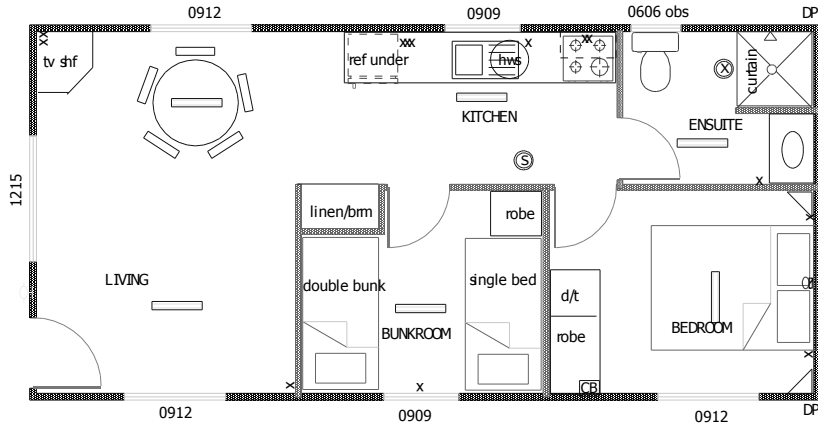


Exterior Option- Suggestion Only.

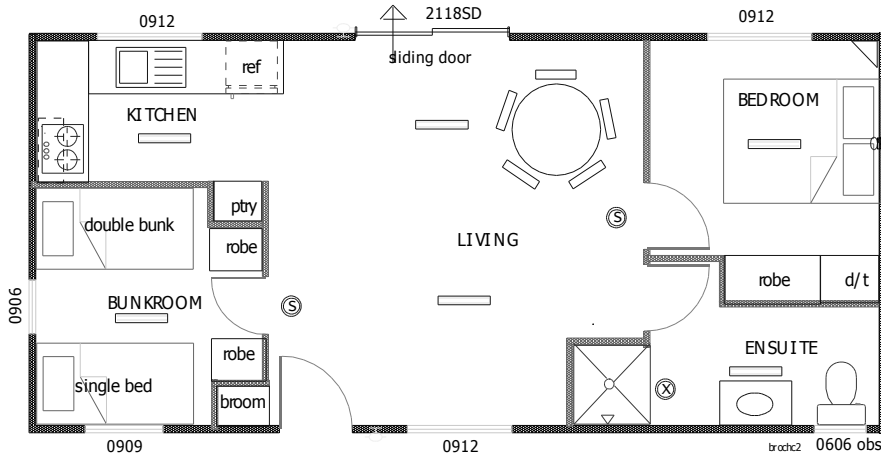
## Lane Cove 9m x 4.5m



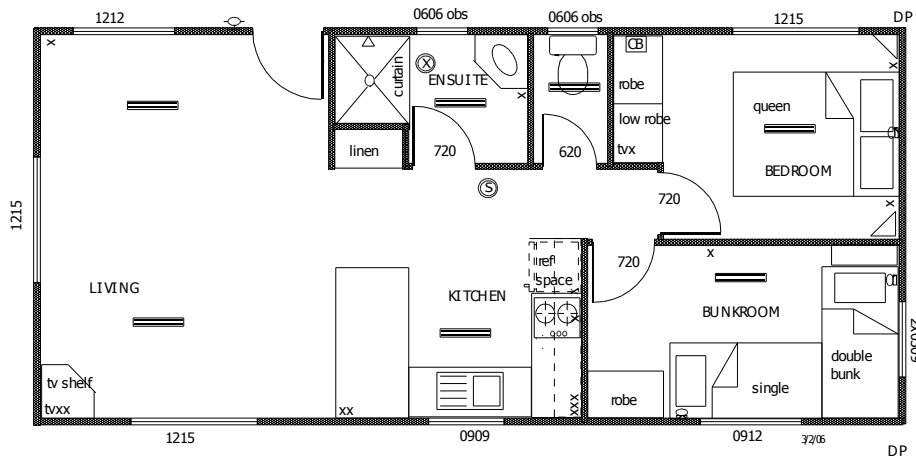
**Bawley Point 9.5m x 4.5m**



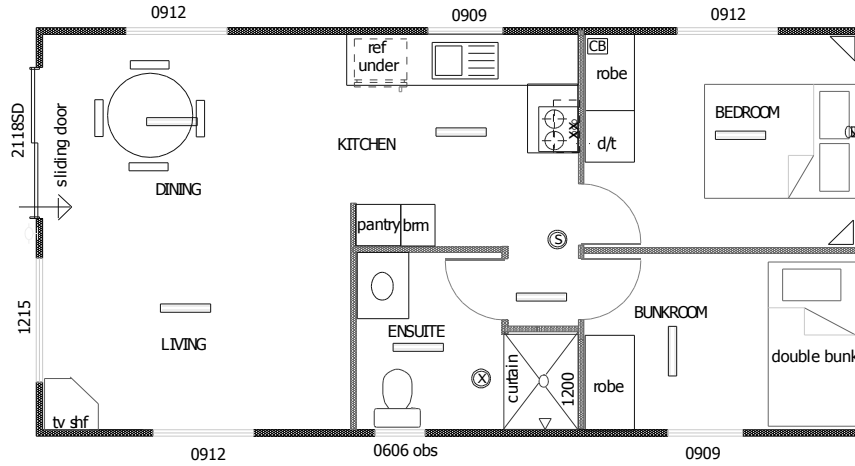
**Sandy Hollow 9.7m x 4.5m**



**Meroo 10.5m x 4.8m**

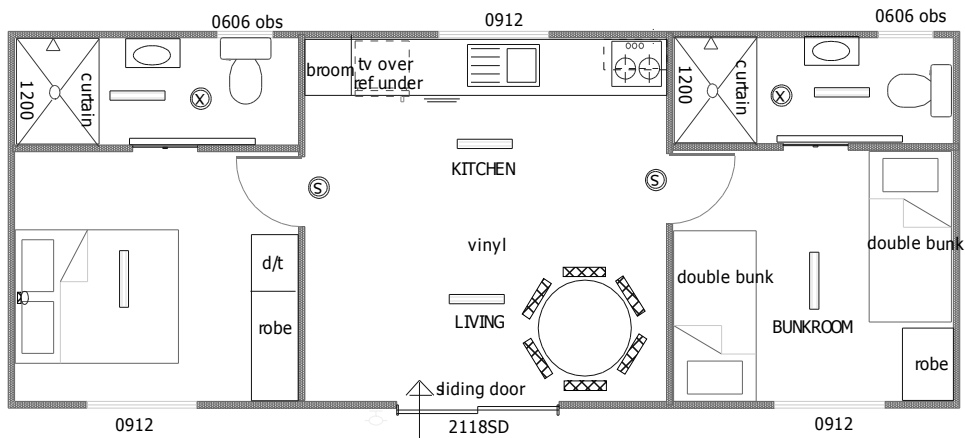


Tuross 10m x 5m

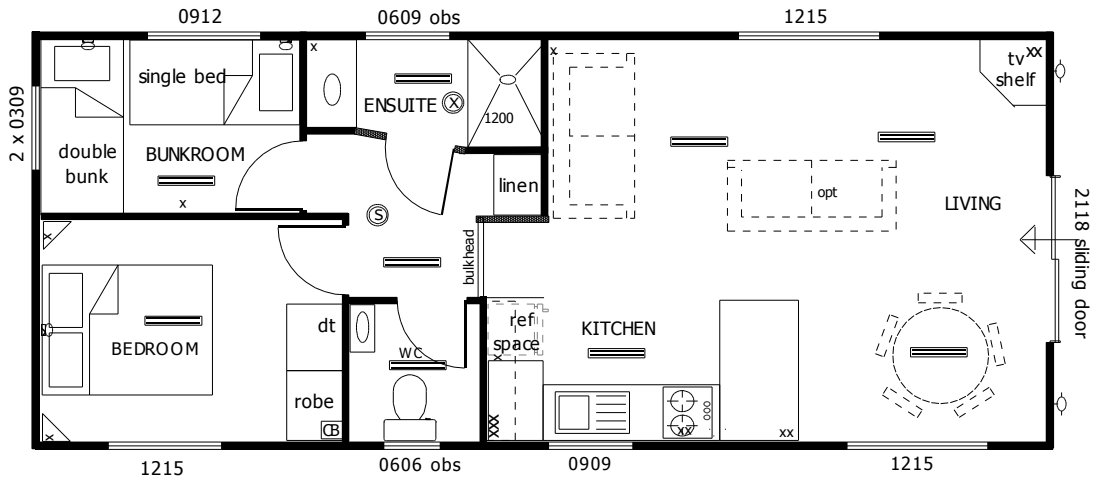


Exterior Option- Suggestion Only.

Sutton Forest 10.5m x4m

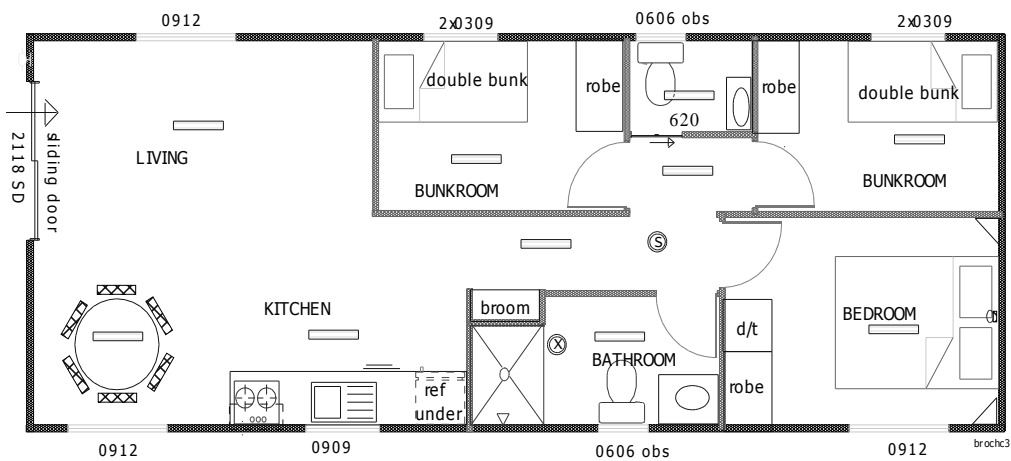


Papua 11m x 4.5m

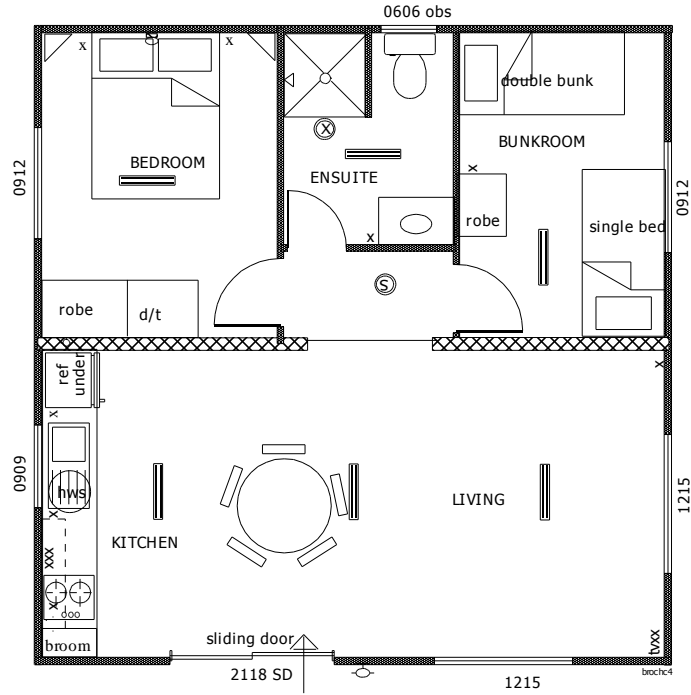


Exterior Option- Suggestion Only.

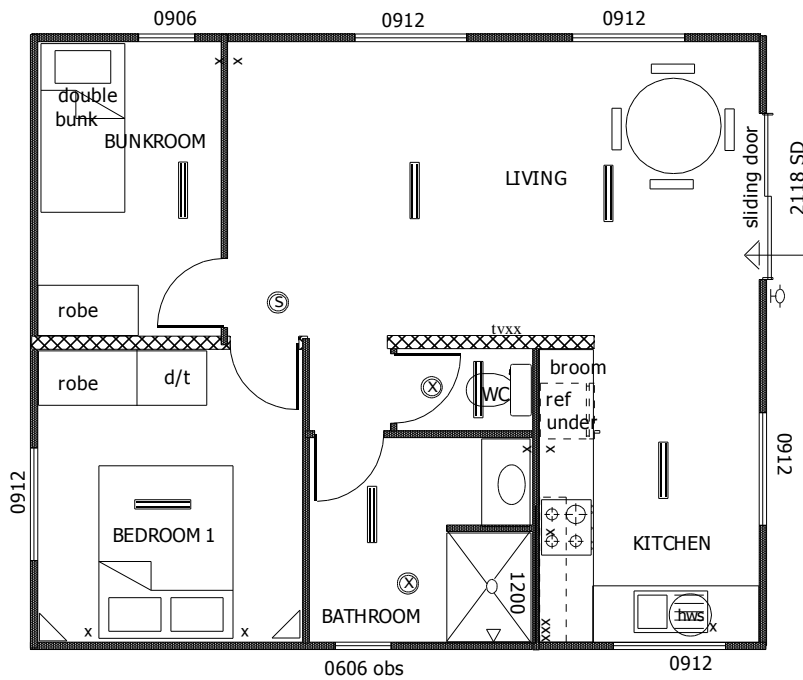
Ulladulla 12m x 4.5m



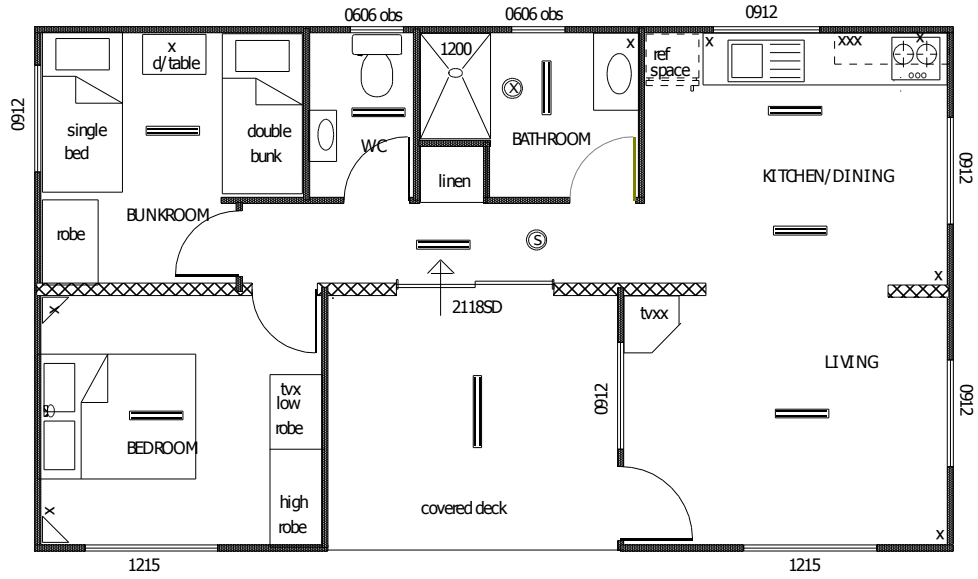
Bendalong 7m x 7m



Albatross 8m x 6.7m



Tarawa 10.5m x 6m



## SPECIFICATIONS - CABINS

### External

Engineer designed supergal steel chassis  
Treated slash Radiata floor joists  
19mm treated particleboard flooring  
Treated timber wall frames and roof trusses  
Gable colorbond roof with gutters finishing at building line  
Unbacked vinyl external weatherboard cladding  
R1.5 anticon (building blanket) in roof  
R1.5 insulation in external walls  
Flame retardant foil insulation in walls  
Powder coated aluminium windows with fly screens and locks  
Powder coated aluminium sliding door (2100hx1800w) or hinged timber entrance door including door furniture and paint per plan  
Barrier doors with diamond grill to front and rear

### Internal

Painted aquachek wet area cladding to wet area walls  
Painted gyprock walls and flat ceilings remainder  
Painted redicote internal doors with door furniture  
Painted finger jointed pine skirtings & architraves  
Two coats premium paint throughout  
Water-proofed tiled floor (200 x 200) in wet areas  
Vinyl flooring – allowance \$30 per sqm in kitchen and dining  
Carpet on gold foam underlay – allowance \$30 per sqm in bedrooms and living  
Tiled splashback to sink & vanity

### White goods/electricals

Builders standard 50 Ltr Electric Hot Water System  
2 burner electric stove with grill  
Rangehood  
Double power points and switches throughout  
Light Shades throughout  
200mm ceiling mounted exhaust fan  
Hard wired smoke detector  
TV outlet  
External Light at Entrance Door

### Fitout

Laminated kitchen bench with 16mm HMR cupboards under  
Laminex customwood doors to kitchen cupboards, robes and vanity as per plan  
Rangehood cupboard, microwave shelf  
Built in refrigerator space, breakfast bar as per plan  
Two drawer kitchen unit with cutlery divider  
Sliding door robes with shelving, hanging space with rail in bedrooms  
Vanity unit with two doors and single shelf  
Linen/broom cupboard and pantry as shown on plan

### Plumbing & accessories

Stainless Steel kitchen sink  
900mm or 1200mm fibreglass shower cubicle with built in soap dish and 300mm hob plus Chrome Curtain Rod  
Acrylic drop-in vanity basin  
White toilet suite (dual flush)  
Chrome shower, laundry, kitchen and vanity tap fittings  
Vanity mirror 600 x 600 (aluminium trim)  
Bathroom fittings – toilet roll holder, towel rail, robe hooks

### Optional Upgrades

**Lifestyle Homes & Cabins can modify most of the designs to suit you and the following are some of the more common variations**

Gas Appliances & Heating  
Painted weathertex external cladding  
R2.0 batts in walls and flat ceilings  
R2.0 or greater under floor insulation  
Ceiling fan or ceiling fan with light  
Fan/2light/heater in bathroom  
Split or box air conditioning  
Cooktop and underbench or wall oven  
Sub-floor infill  
Verandahs/unroofed decks/ pergolas  
Carport  
Skillion, curved or hip roofline  
Spa, bath/shower combination, shower cubicle  
Larger windows and doors  
Landing, ramp or steps  
Pivot shower glass door  
Floating & Timber Floors  
Security System  
Stone Benchtops